



In2Care[®] efficacy against *Culex* mosquitoes

Practical aspects of In2Care[®] treatment to control *Culex*

1. For the best control of *Culex*, we recommend to deploy the Station just before the start or early in the season. Service is recommended every 4 weeks (service recommendation for *Aedes* is 4 to 6 weeks).
2. When targeting *Culex* it is recommended that an initial barrier treatment be done with approved, non-repellent adulticide.
3. *Culex* mosquitoes can fly much further than *Aedes* mosquitoes. Thus, the influx of adults from outside the treatment area might be higher. Therefore, an integrated service of In2Care with occasional spraying treatments is recommended.

To Learn more
about In2Care[®]

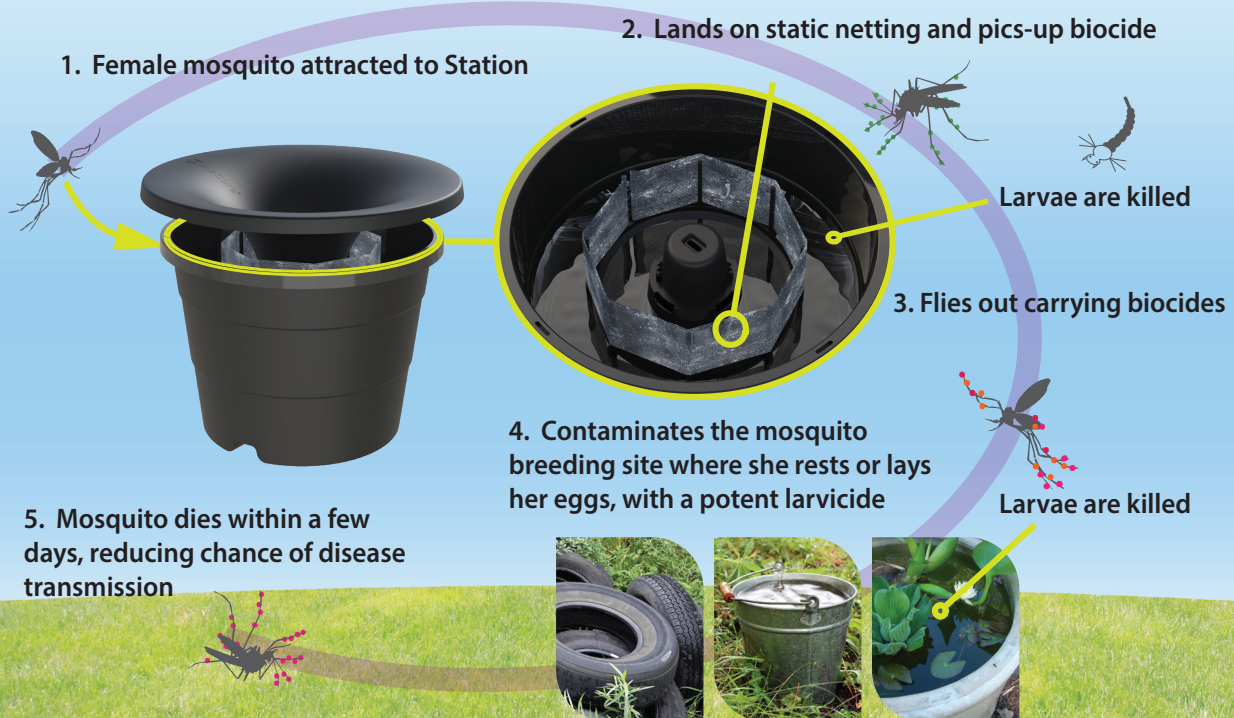
SCAN HERE



OR

CLICK HERE

How does the In2Care Mosquito Station work?



EPA approved and effective
against *Aedes* & *Culex* mosquitoes

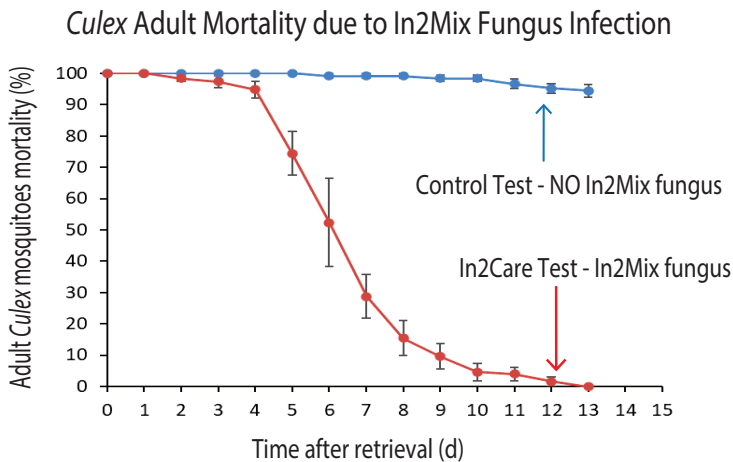


Contact us

www.in2care.org | info@in2care.org

Validated results of In2Care® for the control of *Culex* mosquitoes

Fungus in the In2Mix® kills >80% of adult *Culex* mosquitoes within 8 days (1).



Culex larvae in In2Care Station do not develop into adult mosquitoes. They die as pupae.

Larvicide in In2Mix is effective for *Aedes* and *Culex* mosquitoes: 0% emergence of new mosquitoes from eggs laid inside the Station.

In2Care Station strongly reduces the development & emergence of new mosquitoes in surrounding breeding and resting sites (1,2,3).

Pupae turn dark brown color when they die because of pyriproxyfen

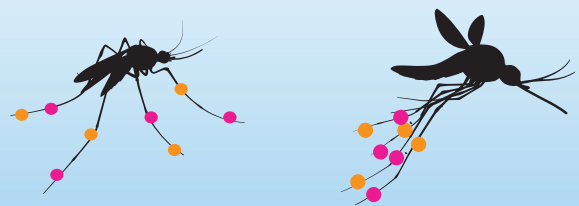


Egg-laying *Culex* mosquitoes are highly attracted to In2Care Station.

≈ 4x more *Culex* egg rafts in In2Care Station compared to an alternative breeding site (1).



Culex mosquitoes spread larvicide to surrounding breeding sites. This is known as "auto-dissemination" (1,2).



Did you know this about *Culex* mosquitoes?

- In2Care Station is effective against both *Aedes* and *Culex* mosquitoes.
- *Culex* mosquitoes are present throughout the US.
- *Culex* mosquitoes may transmit diseases such as West Nile virus and Dog Heartworm.
- Wide range of superior marketing materials available to support your business.



Studies:

1. Cage tests for evaluating the attraction and efficacy of In2Care® Mosquito Stations with In2Mix® on *Culex quinquefasciatus* mosquitoes (In2Care, The Netherlands)
2. Semi-field tests for evaluating the attraction, larvicidal efficacy, adulticidal efficacy and auto-dissemination efficacy of In2Care® Mosquito Stations with In2Mix® on *Culex quinquefasciatus* mosquitoes (University of Florida, United States of America).
3. Field Tests on wild *Aedes* and *Culex* mosquito populations in San Bernardino County, California (West Valley Mosquito & Vector Control District, United States of America)